

Typical Features

- ◆ Wide input voltage range 2:1
- ◆ Efficiency 92% (Typ.)
- ◆ Low standby power consumption
- ◆ Operating Temperature from -40°C to +105°C
- ◆ High isolation voltage 1500VDC(input-output) & 1500VDC(input-case)
- ◆ Input under voltage protection, output over current, over voltage, over temp. & short circuit protections
- ◆ Standard 1/2 brick size

ZBD600-48S24 is a high-performance DC-DC modular converter with the rated input voltage 48VDC (full range from 36V to 75VDC), regulated single output 24V/600W without minimum load limit. It has the advantage of high isolation voltage, Maximum operating temperature up to 105°C, with input under-voltage protection, output over-current, over-voltage, over-temperature and short circuit protections, input ON/OFF control, output voltage distal end compensation and Trim function, etc.

Typical Product List

Part No.	Input voltage range (VDC)	Output Power (W)	Output Voltage (VDC)	Output Current (A)	Ripple & Noise (mVp-p)	Full load Efficiency (%) Min/Typ.	Remark
ZBD600-48S24C	36-75	600	24	25	240	90/92	Positive logic Standard
ZBD600-48S24N							Negative logic Standard
ZBD600-48S24C-H							Positive logic With heat sink
ZBD600-48S24N-H							Negative logic With heat sink

Input Specifications

Item	Operating conditions	Min.	Typ.	Max.	Unit
Input current Max	Input 36VDC@ full load	--	--	20	A
No-load current	Rated input voltage	--	--	30	mA
Input inrush voltage (1sec. max.)	Unit could be permanently broken over this voltage	-0.7	--	100	VDC
Start-up voltage		--	--	36	
Under-voltage protection	With No-load (the over current protection could work in advance at full load)	--	--	35	
ON/OFF Control (CNT)	Positive logic: CNT no connection or connected to 3.5-15V to turn ON, connected to 0-1.2V to turn OFF the converter.			Reference voltage -Vin	
	Negative logic: CNT no connection or connected to 3.5-15V to turn OFF, connected to 0-1.2V to turn ON the converter.				

Output Specifications

Item	Operating conditions	Min.	Typ.	Max.	Unit
Output voltage accuracy	Nominal input voltage, 0%-100% load	--	±0.5	±1.0	%
Line regulation	Full load, input voltage from low to high	--	±0.1	±0.5	
Load regulation	Nominal input voltage, 10%-100% load	--	±0.1	±0.5	
Transient recovery time	25% load step change (step rate 1A/50uS)	--	200	250	uS
Transient response deviation		-5	--	+5	%
Temperature drift coefficient	Full load	-0.02	--	+0.02	%/°C
Ripple & Noise	20M bandwidth, with external capacitor ≥470uF	--	150	240	mVp-p
Output voltage adjustment (TRIM)		-20	--	+10	%
Distal end compensation (Sense)		--	--	5	%
Over temperature protection	Maximum temperature of the Metal Base	105	115	125	°C
Output over voltage protection		28	--	33	V
Output over current protection		27	--	33	A
Output short circuit protection		Hiccup, continuous, self-recovery			

General Specifications

Item	Operating conditions		Min.	Typ.	Max.	Unit
Isolation voltage	I/P-O/P	Test 1min, leakage current <3mA	1500	--	--	VDC
	I/P-Case	Test 1min, leakage current <3mA	1500	--	--	VDC
	O/P-Case	Test 1min, leakage current <3mA	500	--	--	VDC
Insulation resistance	I/P-O/P	@ 500VDC	100	--	--	MΩ
Switching frequency			--	180	--	KHz
MTBF			150	--	--	K hours

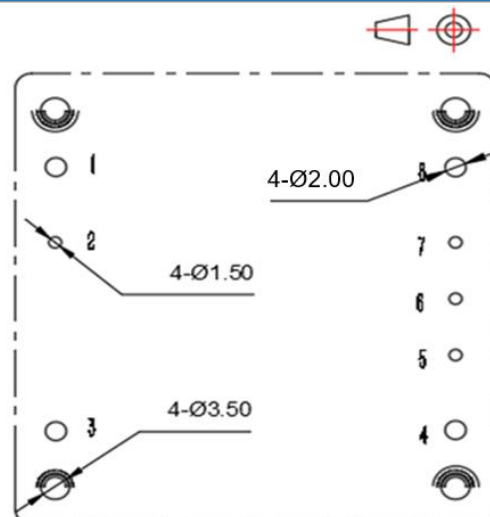
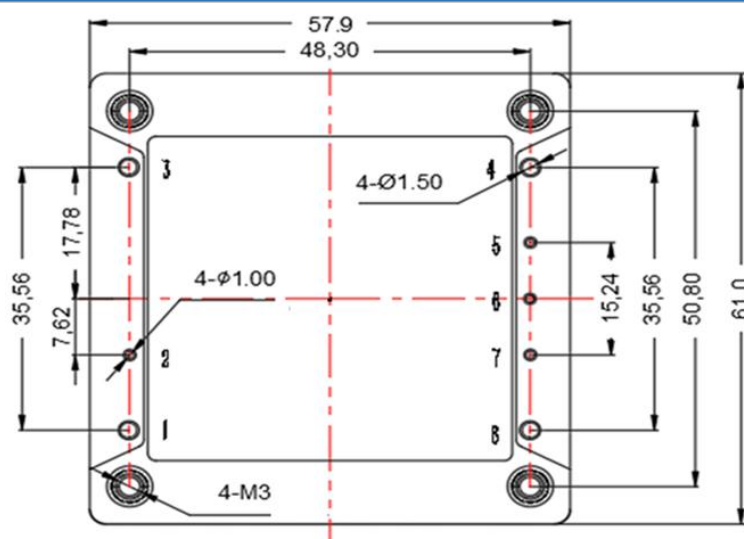
Environmental characteristics

Item	Operating conditions	Min.	Typ.	Max.	Unit
Operating temperature	Refer to the temperature derating graph	-40	--	+105	°C
Storage humidity	No condensing	5	--	95	%RH
Storage temperature	1.5mm from the case, <1.5S	-40	--	+125	°C
Pin soldering temperature		--	--	+350	
Cooling requirement		EN60068-2-1			
Dry and heat requirement		EN60068-2-2			
Moisture and heat requirement		EN60068-2-30			
Shock and vibration		IEC/EN 61373 C1/Body Mounted Class B			

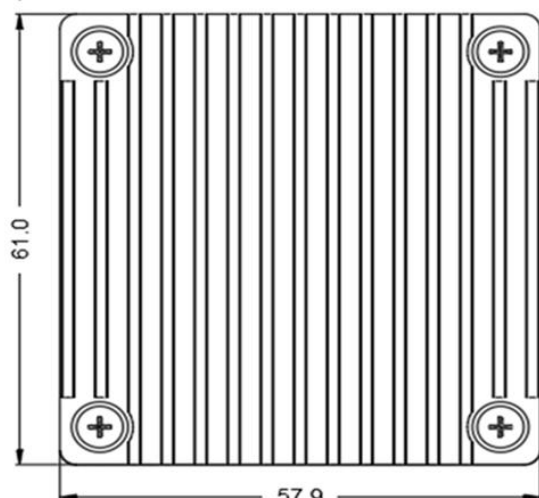
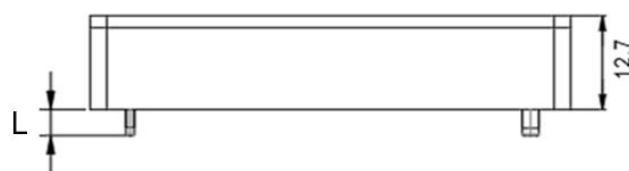
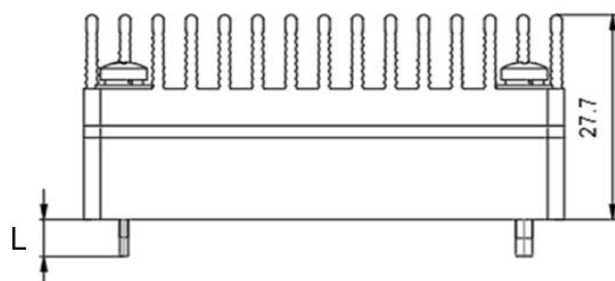
EMC Performances				
EMI	CE	EN55032-3-2	150kHz-500kHz 66dBuV	
		EN55032-2-1	500kHz-30MHz 60dBuV	
	RE	EN55032-3-2	30MHz-230MHz 50dBuV/m at 3m	
		EN55032-2-1	230MHz-1GHz 57dBuV/m at 3m	
EMS	ESD	IEC/EN61000-4-2	Contact ±6KV/Air ±8KV	perf. Criteria B
	RS	IEC/EN61000-4-3	10V/m	perf. Criteria A
	EFT	IEC/EN61000-4-4	±2kV 5/50ns 5kHz	perf. Criteria A
	Surge	IEC/EN61000-4-5	Line to line ± 2KV	perf. Criteria B
	CS	IEC/EN61000-4-6	10 Vr.m.s	perf. Criteria A

Physical Characteristics	
Case materials	Metal base + Plastic case in black, flame class UL94-V0
Heat sink	Dimension 61.0x57.9x15.0mm, weight 75g, Aluminum, anodized black
Cooling method	Conduction cooling or forced air cooling with fan
Unit weight	Standard 125g, with heatsink 203g

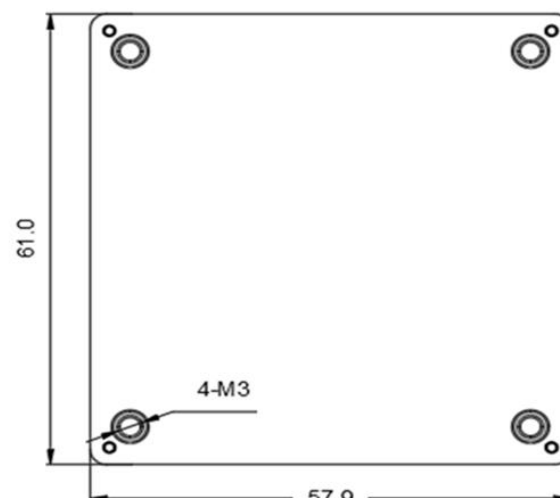
Mechanical Dimensions and Pin-out function description



Recommended holes for PCB



Standard + Heat sink
61.0X57.9X27.7mm



Standard
61.0X57.9X12.7mm

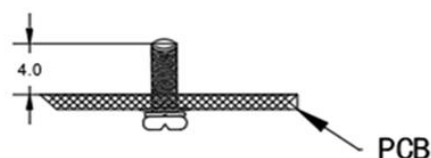
Unit: mm

2,5,6,7 Pin diameter: 1.00

1,3,4,8 Pin diameter: 1.50

Tolerance: X.X ± 0.50 mm, X.XX ± 0.10 mm

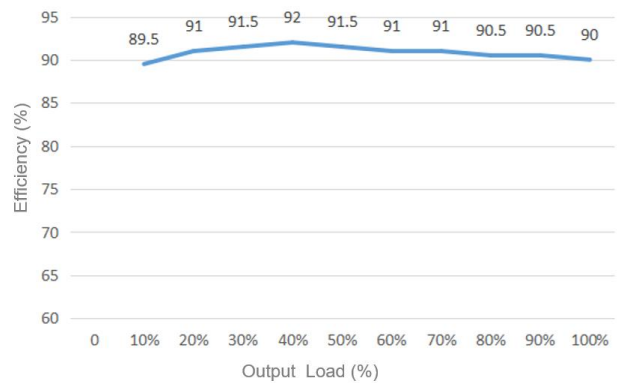
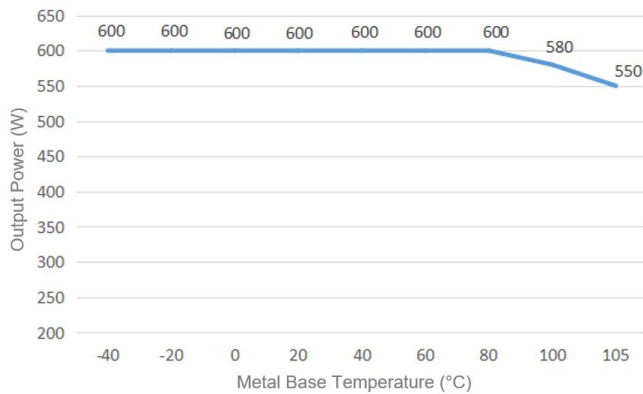
Screwing torque: 0.4 N.m Max



Pin Length L=4.0mm

Pin No.	1	2	3	4	5	6	7	8
Function	Vin+	CNT	Vin-	Vout-	-Sense	TRIM	+Sense	Vout+

Product Characteristics Graphs



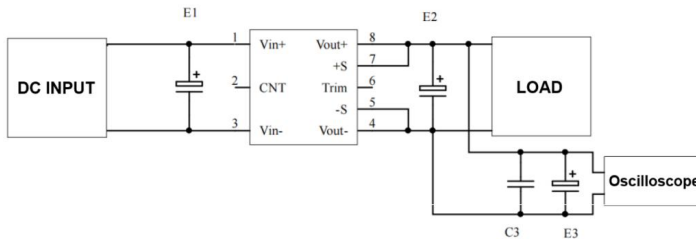
Note:

- Both the output power and efficiency in the graphs have been tested with typical values.
- The data in the temperature derating graph have been tested at Aipu laboratory test conditions. It is recommended to keep the temperature of the Metal base not more than 80 °C when the converter operates at the rated load for the application.

Recommended Circuits for Application

1. Ripple & Noise

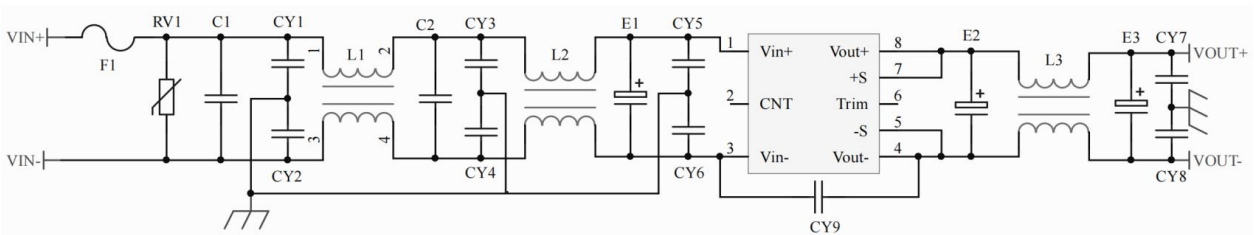
All this series of products will be tested according to this circuit diagram below before shipping.



Capacitance Output Volt.	E1 (μF)	E2 (μF)	C3 (μF)	E3 (μF)
3.3VDC	100	1000	1	10
5VDC		680		
12VDC		470		
.....	68	68	1	10
48VDC		68		
.....		68		
110VDC		68		

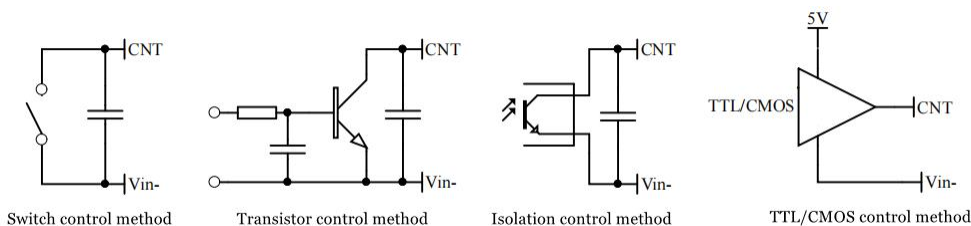
2. Recommended circuit for application

If this circuit diagram recommended below is not adopted, an electrolytic capacitor $\geq 220\mu\text{F}$ should be used at the input to suppress the possible surge voltage.



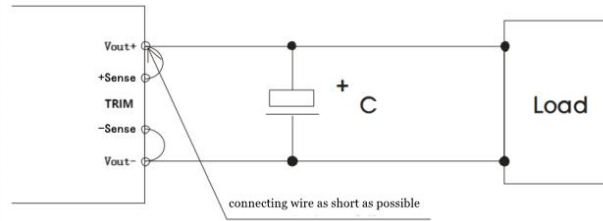
F1	T30A Time delay FUSE
RV1	14D 100V Varistor
C1, C2	105/250V Polyester film capacitor
CY1, CY2, CY3, CY4, CY5, CY6	102/250Vac Y2 capacitor
CY7, CY8	103/2KV Ceramic capacitor
CY9	471/250Vac Y2 capacitor
E1	220μF/100V Electrolytic capacitor
E2, E3	470μF/35V Electrolytic capacitor
L1, L2	>3mH, Temperature rise less than 25° @20A
L3	>47uH, Temperature rise less than 25° @25A

3. Recommended circuits for the ON/OFF Control (CNT)



4. Application for Sense

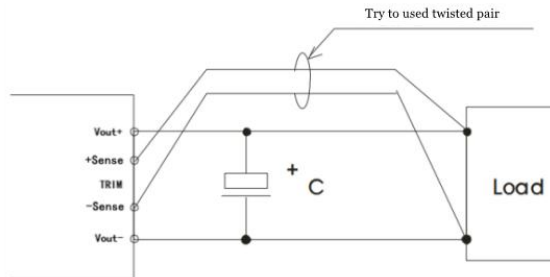
1) With NO distal end compensation



Note:

1. Vout+ & Sense+, Vout- & Sense- should be shorted when distal end compensation is not needed
2. The lead wire between Vout+ and Sense+, Vout- and Sense- should be as short as possible, and close to the pins, or else the output may be unstable.

2) With distal end compensation



Notes:

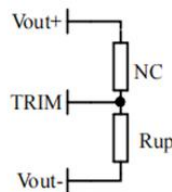
1. The output voltage may be unstable if the compensation cables are too long.
2. The twisted pair or shielded cables are recommended, the cable length should be as short as possible.
3. Wide copper path on PCB or thick lead wires between the power supply and the load should be used to achieve the line voltage drop <0.3V. The target is to keep output voltage within the specified range.
4. The leads wire resistance may create the output voltage oscillation or larger ripples. Please verify it before to use.

5. TRIM and calculation of TRIM resistance

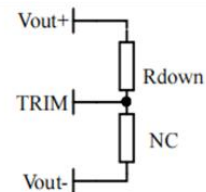
The calculation of ΔU and R_{up} & R_{down} :

$$R_{up} = 75 / \Delta U - 5.1 \text{ (K}\Omega\text{)}$$

$$R_{down} = 30 * (21.5 - \Delta U) / \Delta U - 5.1 \text{ (K}\Omega\text{)}$$



Voltage-up: Add R_{up} between Trim and Vout-



Voltage-down: Add R_{down} between Trim and Vout+

6. This product is not available to be used in parallel to increase the output power. Please contact Aipu technician for this kind of requirement.

Others

1. The product warranty period is two years. The failed product can be repaired/replaced free of charge if it operates at normal condition. A paid service shall be also provided if the product fails after operating under wrong or unreasonable conditions.
2. Aipupower can provide customization design and filter modules for matching, please contact our technician for details.

Guangzhou Aipu Electron Technology Co., Ltd

Address: Building 4, HEDY Park, No.63, Punan Road, Huangpu Dist, Guangzhou, China.

Tel: 86-20-84206763 Fax: 86-20-84206762 HOTLINE: 400-889-8821

E-mail: sales@aipu-elec.com Website: <https://www.aipupower.com>